

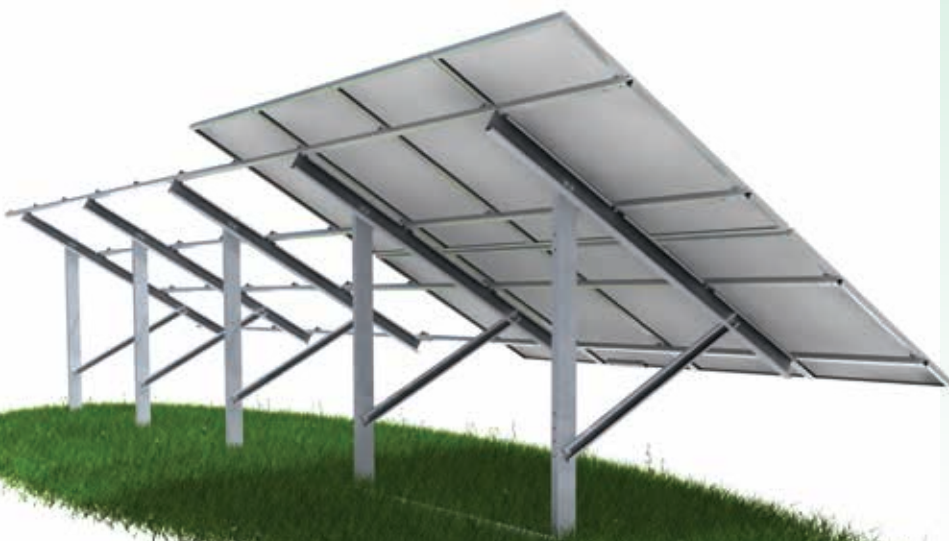
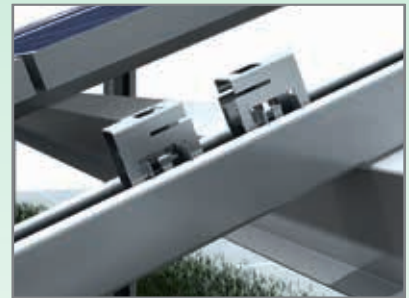
## System 4.1 2 in Portrait Single Post

Where table height and depth are a consideration, 2 in portrait - 20 panels works extremely well. Can also be configured as continuous if necessary.

We have a full range of framing systems to suit even the most challenging of terrains, single or twin post, driven pile on consolidated ground and ground anchor or ballasted for landfill and archaeological sites. Galvanised and warranted for 25 years\*.

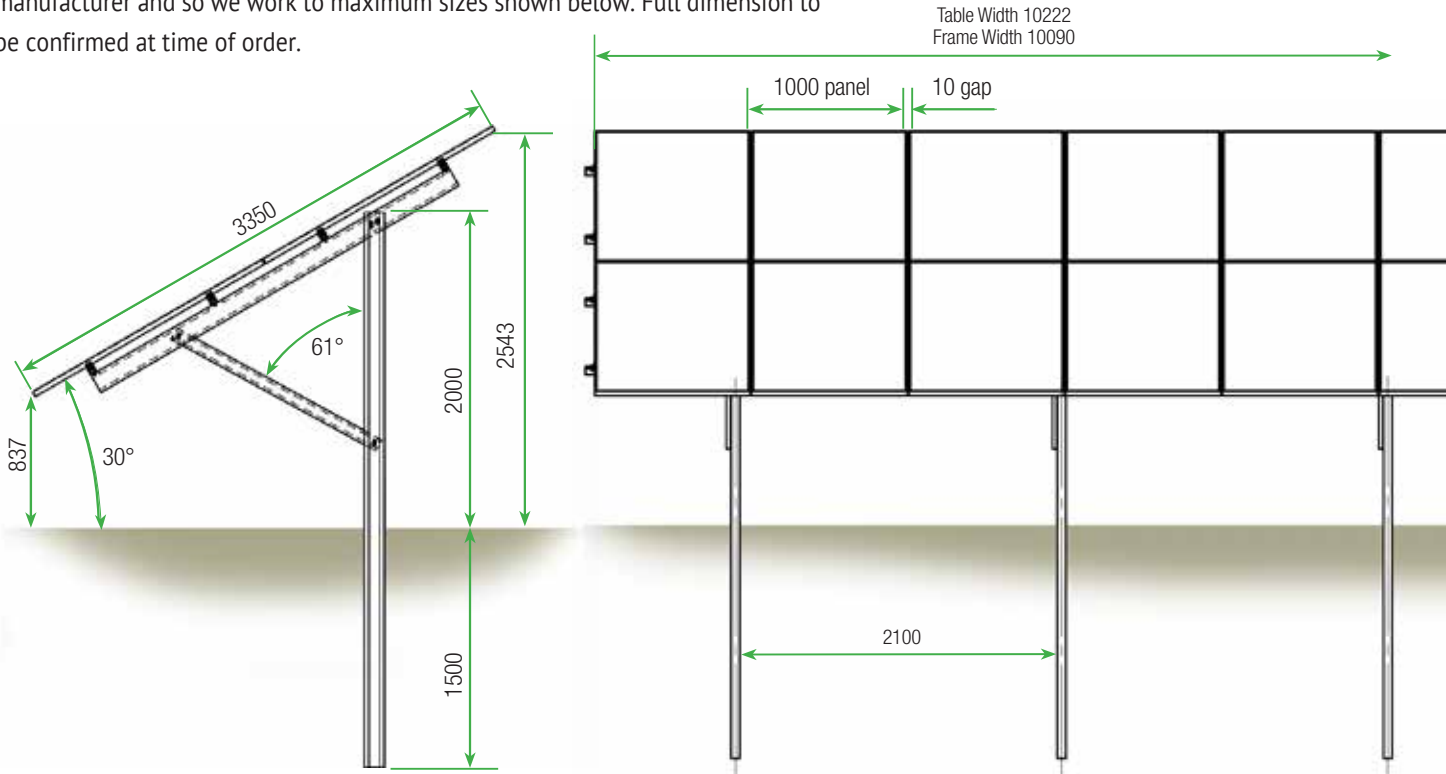
All our designs are proven and tested in virtual and real environments. We not just meet, but exceed all requirements in obtaining our valued Design Codes.

We offer a full structural and Geotechnical consultancy, site investigation and reporting service to further compliment and reinforce the quality of our installations.



# System 4.1

Our standard tables come in a 30° angle as standard, however, we can provide different angles by special request (minimum volumes apply). Each installation is tailored to suit the site. Panel sizes may differ slightly from manufacturer to manufacturer and so we work to maximum sizes shown below. Full dimension to be confirmed at time of order.



## Technical Information

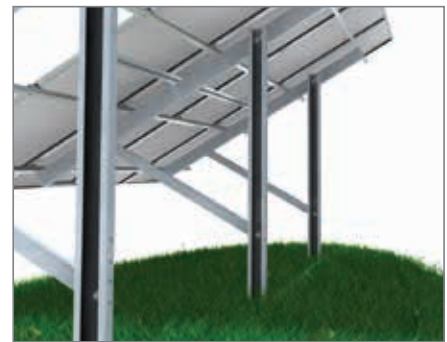
Frame Specification	Description
Panel Configuration	2 Portrait - 20 panels wide (other widths can be specified)
Panel Angles	Standard 30° (can be tailored to suit site)
Foundation System	Single or Twin Post - Driven Pile
Wind Speed & Altitude	Framework designed in accordance with BS EN 1991-1-4:2005 +A1:2010
Stinger Configuration	4no. Unistrut-style Stringers
Panel Clamping Option 1	Aluminium top hat clamp
Panel Clamping Option 2	Solar 28C non mechanical fastener clip
Panel Clamping Option 3	Under bolt
Warranty	25 years upon final delivery*
Design Codes	BS EN 1090 & BS EN 1991 Parts 1, 3 & 7 (Eurocodes)
Frame & Pile Specification	Galvanised sheet steel, Z450 DX51D to BS EN 10346

Our strength in flexibility gives us the edge when it comes to solving problems created by difficult or unusual sites. Our systems are designed to work, and work well under a wide variety of situations.

Please contact us to discover how we can help get your project to completion.

\*Terms and conditions apply

## Ground Fixing



### Driven Post mount system

Most commonly used mounting system, where ground integrity is generally good and stable. We offer a range of twin-post systems where ground conditions are less than favourable



Corbin Industries Limited, The Fireworks, North Mills Trading Estate, Bridport, Dorset, DT6 3BE  
 +44 (0)1308 459950 info@corbinindustries.co.uk  
 www.corbinindustries.co.uk

Design • Manufacture • Installation • Surveys • Support

